



General characteristics

Number of poles	Nr.	3
Overvoltage category		III
Pollution degree		3
Frontal IP degree		IP20
Type of release		Thermal
Protection fuse		
	gG (IEC)	A 4
	aM (IEC)	A 2
	RK5 (UL)	A 6
Phase failure detection		yes
Reset mode		Manual or automatic

Power circuit characteristics

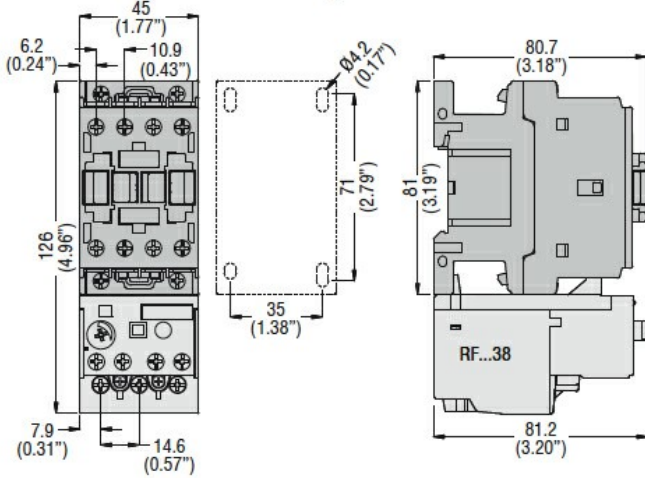
Rated insulation voltage U_i IEC/EN	V	690
Rated impulse withstand voltage U_{imp}	kV	6
Rated operational voltage	V	690
Operational frequency		
	min	Hz 0
	max	Hz 400
Operational current I_e		
	Operational current min	A 1
	Operational current max	A 1.6
Tripping class		10A
Test Button		Yes
Trip indicator		yes
Terminals		
	type	screw and washer
	screw	M4
	width	mm 12.6
	tool	Phillips 2
Tightening torque for terminals		
	min	Nm 2
	max	Nm 2.5
	min	Ibin 1.5
	max	Ibin 1.8
Conductor section		
	Flexible w/o lug max	mm ² 10
	Flexible c/w lug max	mm ² 6
	AWG/kcmil max	8

Auxiliary circuit characteristics

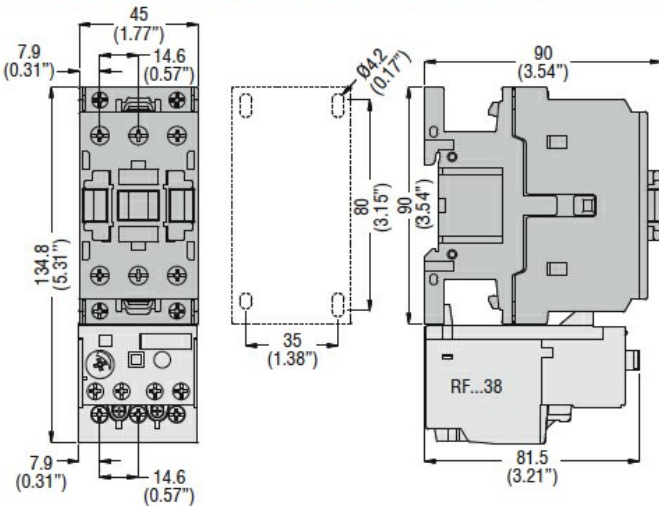
Auxiliary contacts		
	NO	Nr. 1
	NC	Nr. 1

Auxiliary Rated insulation voltage U_i IEC/EN	V	690
Auxiliary Rated impulse withstand voltage U_{imp}	kV	6
Auxiliary Rated operational voltage	V	690
Operating current AC15		
	24V	A 3
	120V	A 3
	240V	A 1.5
	380V	A 0.95
	480V	A 0.75
	500V	A 0.72
	600V	A 0.6
Operating current DC13		
	125V	A 0.11
	600V	A 0.22
IEC Conventional free air thermal current $I_{th} \leq 40^\circ\text{C}$	A	10
Terminals		
	Auxiliary circuit type	screw and washer
	Auxiliary circuit screw	M3.5
	Auxiliary circuit width	mm 8
	Auxiliary circuit tool	Phillips 2
Conductor section		
	Auxiliary circuit Flexible w/o lug max	mm ² 2.5
	Auxiliary circuit Flexible c/w lug max	mm ² 2.5
Tightening torque for terminals		
	Auxiliary circuit min	Nm 0.8
	Auxiliary circuit max	Nm 1
	Auxiliary circuit min	lbin 0.59
	Auxiliary circuit max	lbin 0.74
UL/CSA and IEC/EN 60947-5-1 designation		B600-R300
Ambient conditions		
Operating temperature		
	min	$^\circ\text{C}$ -25
	max	$^\circ\text{C}$ 60
Storage temperature		
	min	$^\circ\text{C}$ -50
	max	$^\circ\text{C}$ 70
Compensation temperature		
	min	$^\circ\text{C}$ -20
	max	$^\circ\text{C}$ 60
Max altitude	m	3000
Mechanical features		
Operating position	normal allowable	Vertical plan $\pm 30^\circ$
Fixing		Direct mounting on BF09... BF38...
Weight	g	160
UL technical data		
Full-load current (FLA) for three-phase AC motor		
	at 480V	A 1.6
	at 600V	A 1.6
Dimensions		

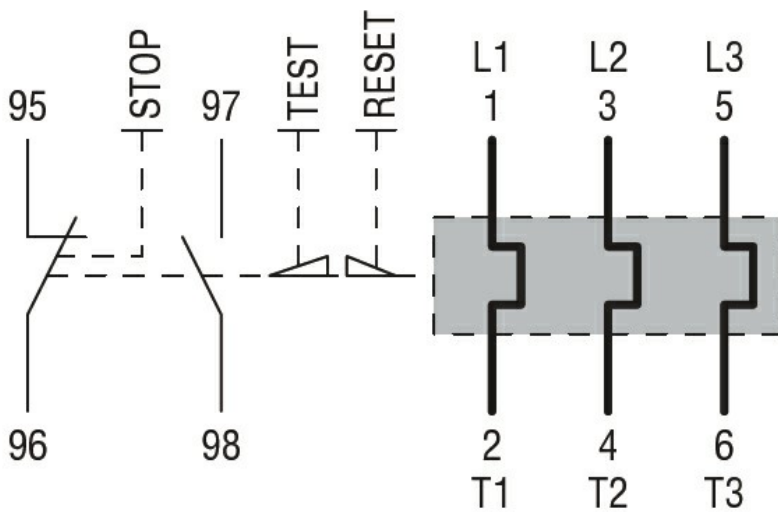
BF00 A... BF09 A... - BF12 A... - BF18 A... - BF25 A... three poles with **RF...38** thermal overload relay



BF26 00A... - BF32 00A... - BF38 00A... three poles with **RF...38** thermal overload relay



Wiring diagrams



Certifications and compliance

Compliance

CSA C22.2 n° 14

IEC/EN 60947-1

IEC/EN 60947-4-1

UL508

Certifications

CCC

cULus

EAC

ETIM classification

ETIM 8.0

EC000106 -
Thermal overload
relay