



General characteristics

| | | |
|-------------------------|----------|---------------------|
| Number of poles | Nr. | 3 |
| Overvoltage category | | III |
| Pollution degree | | 3 |
| Frontal IP degree | | IP20 |
| Type of release | | Thermal |
| Protection fuse | | |
| | gG (IEC) | A 40 |
| | aM (IEC) | A 25 |
| | RK5 (UL) | A 70 |
| Phase failure detection | | yes |
| Reset mode | | Manual or automatic |

Power circuit characteristics

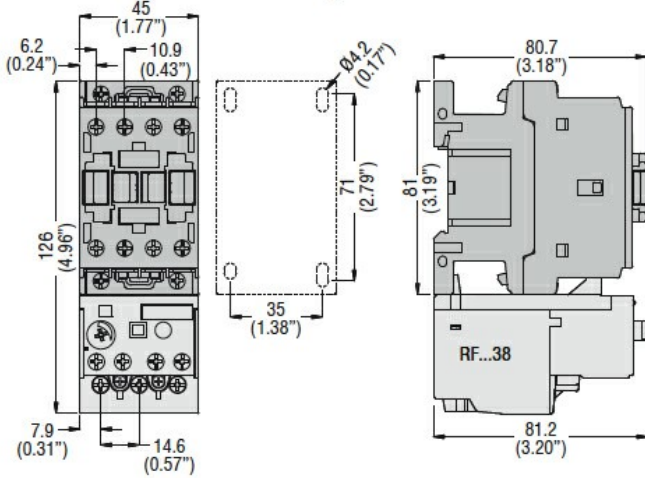
| | | |
|---|-------------------------|--------------------|
| Rated insulation voltage U_i IEC/EN | V | 690 |
| Rated impulse withstand voltage U_{imp} | kV | 6 |
| Rated operational voltage | V | 690 |
| Operational frequency | | |
| | min | Hz 0 |
| | max | Hz 400 |
| Operational current I_e | | |
| | Operational current min | A 13 |
| | Operational current max | A 18 |
| Tripping class | | 10A |
| Test Button | | Yes |
| Trip indicator | | yes |
| Terminals | | |
| | type | screw and washer |
| | screw | M4 |
| | width | mm 12.6 |
| | tool | Phillips 2 |
| Tightening torque for terminals | | |
| | min | Nm 2 |
| | max | Nm 2.5 |
| | min | Ibin 1.5 |
| | max | Ibin 1.8 |
| Conductor section | | |
| | Flexible w/o lug max | mm ² 10 |
| | Flexible c/w lug max | mm ² 6 |
| | AWG/kcmil max | 8 |

Auxiliary circuit characteristics

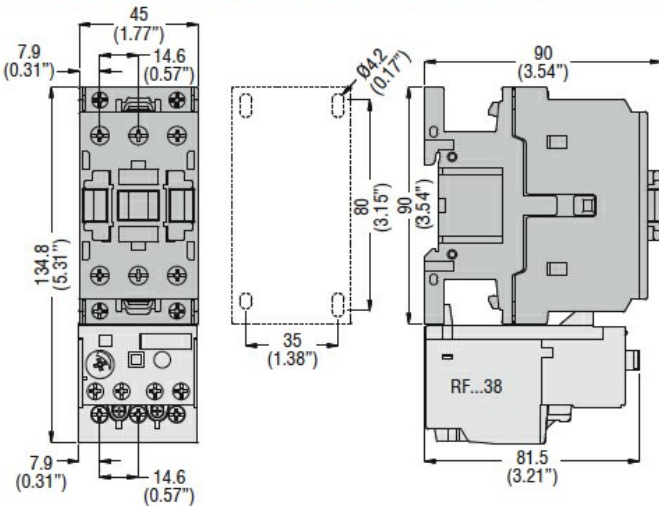
| | | |
|--------------------|----|-------|
| Auxiliary contacts | | |
| | NO | Nr. 1 |
| | NC | Nr. 1 |

| | | |
|--|--|------------------------------------|
| Auxiliary Rated insulation voltage U_i IEC/EN | V | 690 |
| Auxiliary Rated impulse withstand voltage U_{imp} | kV | 6 |
| Auxiliary Rated operational voltage | V | 690 |
| Operating current AC15 | | |
| | 24V | A 3 |
| | 120V | A 3 |
| | 240V | A 1.5 |
| | 380V | A 0.95 |
| | 480V | A 0.75 |
| | 500V | A 0.72 |
| | 600V | A 0.6 |
| Operating current DC13 | | |
| | 125V | A 0.11 |
| | 600V | A 0.22 |
| IEC Conventional free air thermal current $I_{th} \leq 40^\circ\text{C}$ | A | 10 |
| Terminals | | |
| | Auxiliary circuit type | screw and washer |
| | Auxiliary circuit screw | M3.5 |
| | Auxiliary circuit width | mm 8 |
| | Auxiliary circuit tool | Phillips 2 |
| Conductor section | | |
| | Auxiliary circuit Flexible w/o lug max | mm ² 2.5 |
| | Auxiliary circuit Flexible c/w lug max | mm ² 2.5 |
| Tightening torque for terminals | | |
| | Auxiliary circuit min | Nm 0.8 |
| | Auxiliary circuit max | Nm 1 |
| | Auxiliary circuit min | Ibin 0.59 |
| | Auxiliary circuit max | Ibin 0.74 |
| UL/CSA and IEC/EN 60947-5-1 designation | | B600-R300 |
| Ambient conditions | | |
| Operating temperature | | |
| | min | °C -25 |
| | max | °C 60 |
| Storage temperature | | |
| | min | °C -50 |
| | max | °C 70 |
| Compensation temperature | | |
| | min | °C -20 |
| | max | °C 60 |
| Max altitude | m | 3000 |
| Mechanical features | | |
| Operating position | normal allowable | Vertical plan $\pm 30^\circ$ |
| Fixing | | Direct mounting on BF09... BF38... |
| Weight | g | 160 |
| UL technical data | | |
| Full-load current (FLA) for three-phase AC motor | | |
| | at 480V | A 18 |
| | at 600V | A 18 |
| Dimensions | | |

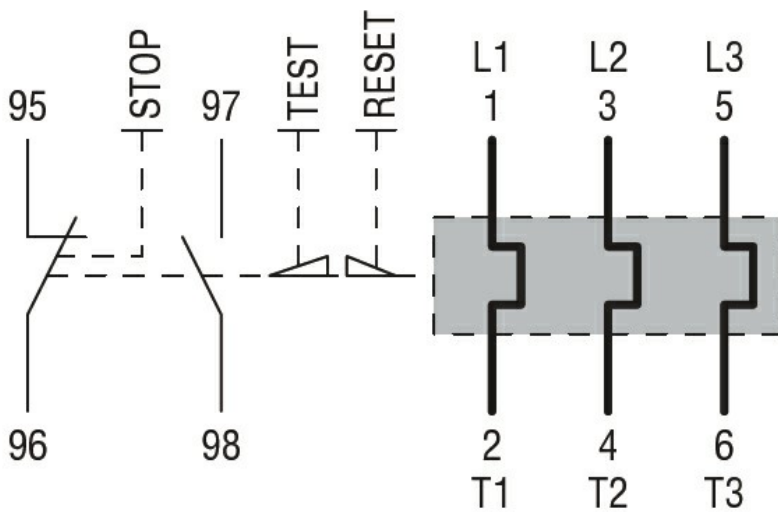
BF00 A... BF09 A... - BF12 A... - BF18 A... - BF25 A... three poles with **RF...38** thermal overload relay



BF26 00A... - BF32 00A... - BF38 00A... three poles with **RF...38** thermal overload relay



Wiring diagrams



Certifications and compliance

Compliance

CSA C22.2 n° 14

IEC/EN 60947-1

IEC/EN 60947-4-1

UL508

Certifications

CCC

cULus

EAC

ETIM classification

ETIM 8.0

EC000106 -
Thermal overload
relay