



### General characteristics

Number of poles	Nr.	3
Overvoltage category		III
Pollution degree		3
Frontal IP degree		IP20
Type of release		Thermal
Protection fuse		
	gG (IEC)	A 4
	aM (IEC)	A 2
	RK5 (UL)	A 3
Phase failure detection		no
Reset mode		Manual or automatic

### Power circuit characteristics

Rated insulation voltage $U_i$ IEC/EN	V	690
Rated impulse withstand voltage $U_{imp}$	kV	6
Rated operational voltage	V	690
Operational frequency		
	min	Hz 0
	max	Hz 400
Operational current $I_e$		
	Operational current min	A 0.63
	Operational current max	A 1
Tripping class		10A
Test Button		Yes
Trip indicator		yes
Terminals		
	type	screw and washer
	screw	M4
	width	mm 12.6
	tool	Phillips 2
Tightening torque for terminals		
	min	Nm 2
	max	Nm 2.5
	min	Ibin 1.5
	max	Ibin 1.8
Conductor section		
	AWG/kcmil max	8

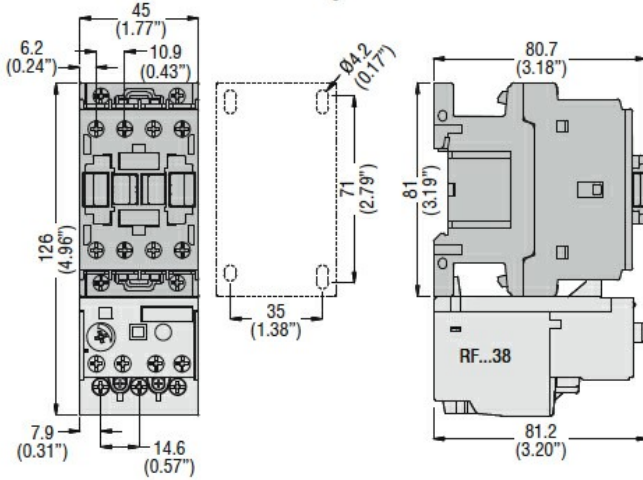
### Auxiliary circuit characteristics

Auxiliary contacts		
	NO	Nr. 1
	NC	Nr. 1
Auxiliary Rated insulation voltage $U_i$ IEC/EN	V	690
Auxiliary Rated impulse withstand voltage $U_{imp}$	kV	6

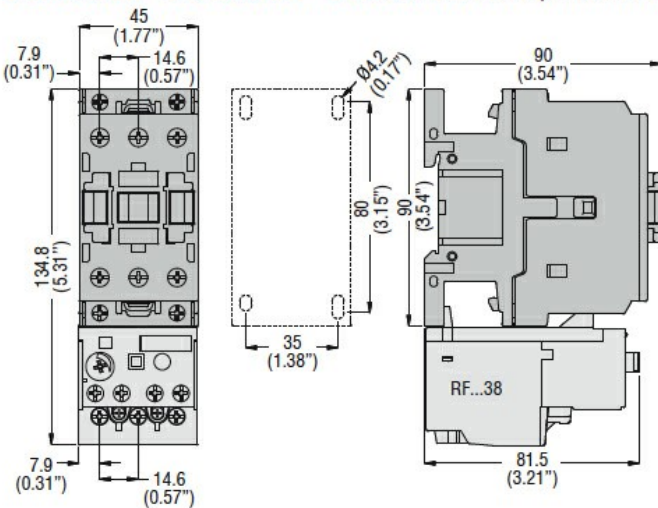
Auxiliary Rated operational voltage	V	690
Operating current AC15	24V 120V 240V 380V 480V 500V 600V	A 3 3 1.5 0.95 0.75 0.72 0.6
Operating current DC13	125V 600V	A 0.11 0.22
IEC Conventional free air thermal current I <sub>th</sub> ≤ 40°C	A	10
Terminals	Auxiliary circuit type Auxiliary circuit screw Auxiliary circuit width Auxiliary circuit tool	screw and washer M3,5 8 mm Phillips 2
Conductor section	Auxiliary circuit Flexible w/o lug max Auxiliary circuit Flexible c/w lug max	mm <sup>2</sup> 2.5 mm <sup>2</sup> 2.5
Tightening torque for terminals	Auxiliary circuit min Auxiliary circuit max Auxiliary circuit min Auxiliary circuit max	Nm 0.8 Nm 1 lbin 0.59 lbin 0.74
UL/CSA and IEC/EN 60947-5-1 designation		B600-R300
<b>Ambient conditions</b>		
Operating temperature	min max	°C -25 °C 60
Storage temperature	min max	°C -50 °C 70
Compensation temperature	min max	°C -20 °C 60
Max altitude	m	3000
<b>Mechanical features</b>		
Operating position	normal allowable	Vertical plan ±30°
Fixing		Direct mounting on BF09... BF38...
Weight	g	160
<b>UL technical data</b>		
Full-load current (FLA) for three-phase AC motor	at 480V at 600V	A 1 A 1
<b>Dimensions</b>		

MOTOR PROTECTION RELAY, NON PHASE FAILURE/NON SINGLE-PHASE SENSITIVE.  
THREE-POLE (THREE-PHASE), MANUAL OR AUTOMATIC RESETTING. DIRECT MOUNTING  
ON BF09 - BF38 CONTACTORS, 0.63...1A

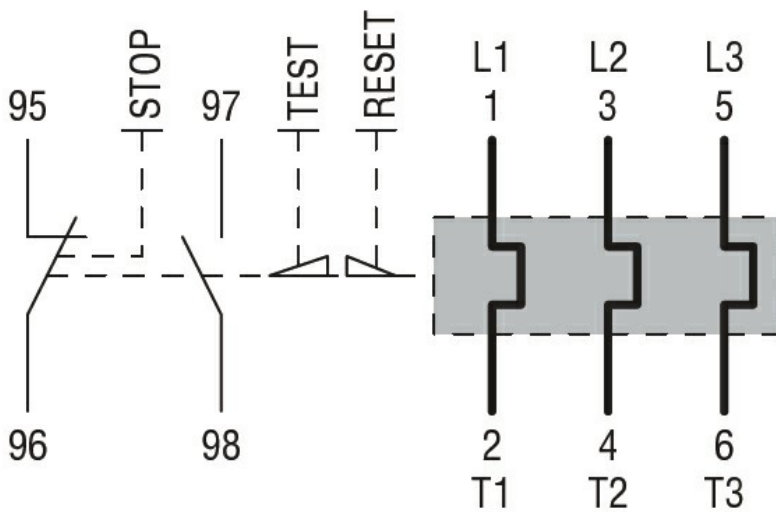
**BF00 A... BF09 A... - BF12 A... - BF18 A... - BF25 A...** three poles with  
**RF...38** thermal overload relay



**BF26 00A... - BF32 00A... - BF38 00A...** three poles with **RF...38** thermal overload relay



**Wiring diagrams**



**Certifications and compliance**

Compliance

CSA C22.2 n° 14

IEC/EN 60947-1

IEC/EN 60947-4-1

MOTOR PROTECTION RELAY, NON PHASE FAILURE/NON SINGLE-PHASE SENSITIVE.  
THREE-POLE (THREE-PHASE), MANUAL OR AUTOMATIC RESETTING. DIRECT MOUNTING  
ON BF09 - BF38 CONTACTORS, 0.63...1A

---

UL508

---

Certifications

CCC

---

cULus

---

EAC

ETIM classification

ETIM 8.0

EC000106 -  
Thermal overload  
relay