

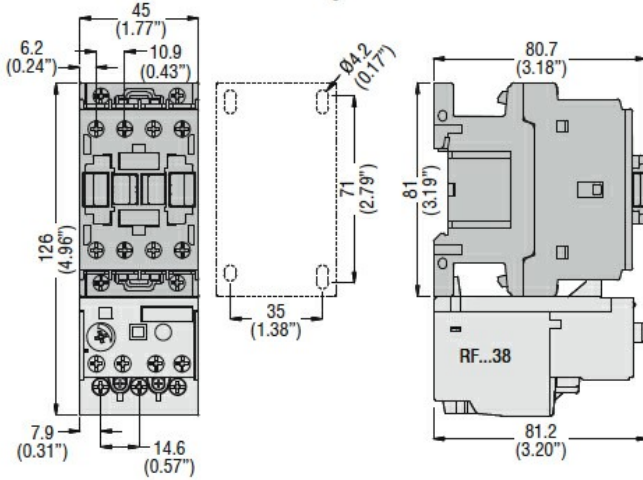


General characteristics			
Number of poles	Nr.	3	
Overvoltage category		III	
Pollution degree		3	
Frontal IP degree		IP20	
Type of release		Thermal	
Protection fuse	gG (IEC)	A	20
	aM (IEC)	A	10
	RK5 (UL)	A	40
Phase failure detection		no	
Reset mode		Manual or automatic	
Power circuit characteristics			
Rated insulation voltage U_i IEC/EN	V	690	
Rated impulse withstand voltage U_{imp}	kV	6	
Rated operational voltage	V	690	
Operational frequency	min	Hz	0
	max	Hz	400
Operational current I_e	Operational current min	A	6.3
	Operational current max	A	10
Tripping class		10A	
Test Button		Yes	
Trip indicator		yes	
Terminals	type	screw and washer	
	screw	M4	
	width	mm	12.6
	tool	Phillips 2	
Tightening torque for terminals	min	Nm	2
	max	Nm	2.5
	min	Ibin	1.5
	max	Ibin	1.8
Conductor section	AWG/kcmil max	8	
Auxiliary circuit characteristics			
Auxiliary contacts	NO	Nr.	1
	NC	Nr.	1
Auxiliary Rated insulation voltage U_i IEC/EN	V	690	
Auxiliary Rated impulse withstand voltage U_{imp}	kV	6	

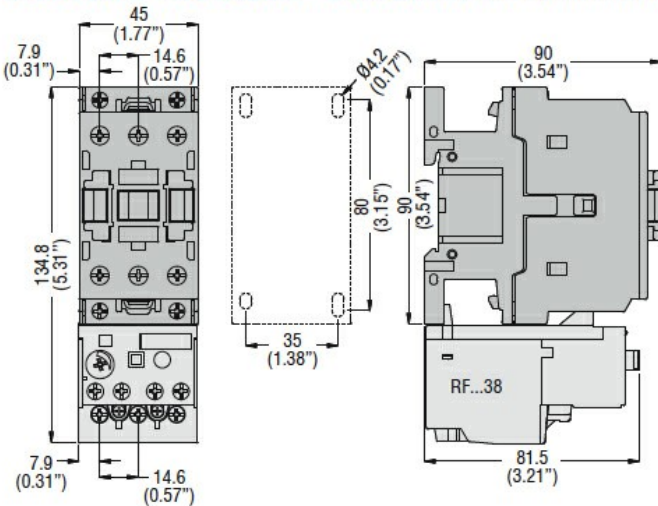
Auxiliary Rated operational voltage	V	690
Operating current AC15	24V 120V 240V 380V 480V 500V 600V	A 3 3 1.5 0.95 0.75 0.72 0.6
Operating current DC13	125V 600V	A 0.11 0.22
IEC Conventional free air thermal current I _{th} ≤ 40°C	A	10
Terminals	Auxiliary circuit type Auxiliary circuit screw Auxiliary circuit width Auxiliary circuit tool	screw and washer M3,5 8 mm Phillips 2
Conductor section	Auxiliary circuit Flexible w/o lug max Auxiliary circuit Flexible c/w lug max	mm ² 2.5 mm ² 2.5
Tightening torque for terminals	Auxiliary circuit min Auxiliary circuit max Auxiliary circuit min Auxiliary circuit max	Nm 0.8 Nm 1 lbin 0.59 lbin 0.74
UL/CSA and IEC/EN 60947-5-1 designation		B600-R300
Ambient conditions		
Operating temperature	min max	°C -25 °C 60
Storage temperature	min max	°C -50 °C 70
Compensation temperature	min max	°C -20 °C 60
Max altitude	m	3000
Mechanical features		
Operating position	normal allowable	Vertical plan ±30°
Fixing		Direct mounting on BF09... BF38...
Weight	g	160
UL technical data		
Full-load current (FLA) for three-phase AC motor	at 480V at 600V	A 10 A 10
Dimensions		

MOTOR PROTECTION RELAY, NON PHASE FAILURE/NON SINGLE-PHASE SENSITIVE.
THREE-POLE (THREE-PHASE), MANUAL OR AUTOMATIC RESETTING. DIRECT MOUNTING
ON BF09 - BF38 CONTACTORS, 6.3...10A

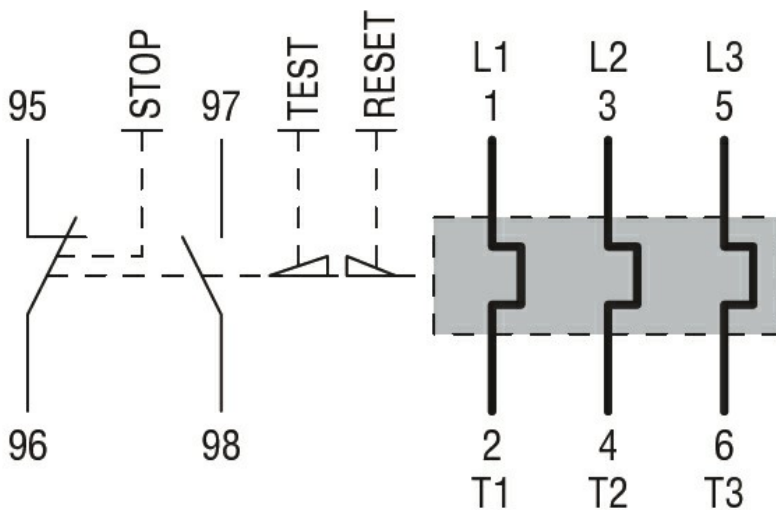
BF00 A... BF09 A... - BF12 A... - BF18 A... - BF25 A... three poles with
RF...38 thermal overload relay



BF26 00A... - BF32 00A... - BF38 00A... three poles with **RF...38** thermal overload relay



Wiring diagrams



Certifications and compliance

Compliance

CSA C22.2 n° 14

IEC/EN 60947-1

IEC/EN 60947-4-1

MOTOR PROTECTION RELAY, NON PHASE FAILURE/NON SINGLE-PHASE SENSITIVE.
THREE-POLE (THREE-PHASE), MANUAL OR AUTOMATIC RESETTING. DIRECT MOUNTING
ON BF09 - BF38 CONTACTORS, 6.3...10A

UL508

Certifications

CCC

cULus

EAC

ETIM classification

ETIM 8.0

EC000106 -
Thermal overload
relay