

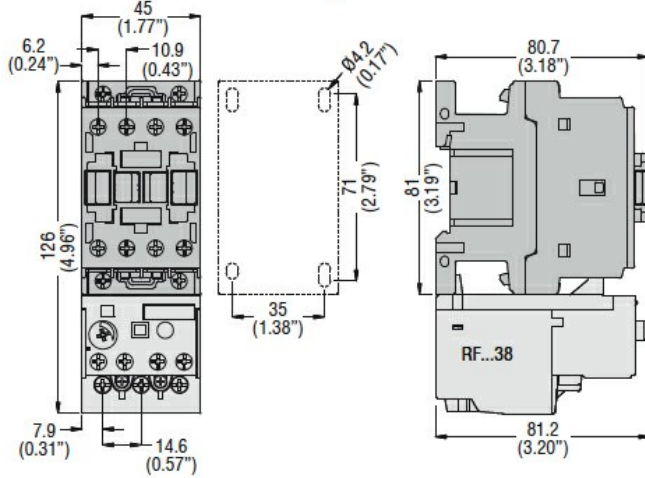


| General characteristics | | | |
|---|-------------------------|---------------------|------|
| Number of poles | Nr. | 3 | |
| Overvoltage category | | III | |
| Pollution degree | | 3 | |
| Frontal IP degree | | IP20 | |
| Type of release | | Thermal | |
| Protection fuse | gG (IEC) | A | 63 |
| | aM (IEC) | A | 40 |
| | RK5 (UL) | A | 120 |
| Phase failure detection | | no | |
| Reset mode | | Manual or automatic | |
| Power circuit characteristics | | | |
| Rated insulation voltage U_i IEC/EN | V | 690 | |
| Rated impulse withstand voltage U_{imp} | kV | 6 | |
| Rated operational voltage | V | 690 | |
| Operational frequency | min | Hz | 0 |
| | max | Hz | 400 |
| Operational current I_e | Operational current min | A | 24 |
| | Operational current max | A | 32 |
| Tripping class | | 10A | |
| Test Button | | Yes | |
| Trip indicator | | yes | |
| Terminals | type | screw and washer | |
| | screw | M4 | |
| | width | mm | 12.6 |
| | tool | Phillips 2 | |
| Tightening torque for terminals | min | Nm | 2 |
| | max | Nm | 2.5 |
| | min | Ibin | 1.5 |
| | max | Ibin | 1.8 |
| Conductor section | AWG/kcmil max | 8 | |
| Auxiliary circuit characteristics | | | |
| Auxiliary contacts | NO | Nr. | 1 |
| | NC | Nr. | 1 |
| Auxiliary Rated insulation voltage U_i IEC/EN | V | 690 | |
| Auxiliary Rated impulse withstand voltage U_{imp} | kV | 6 | |

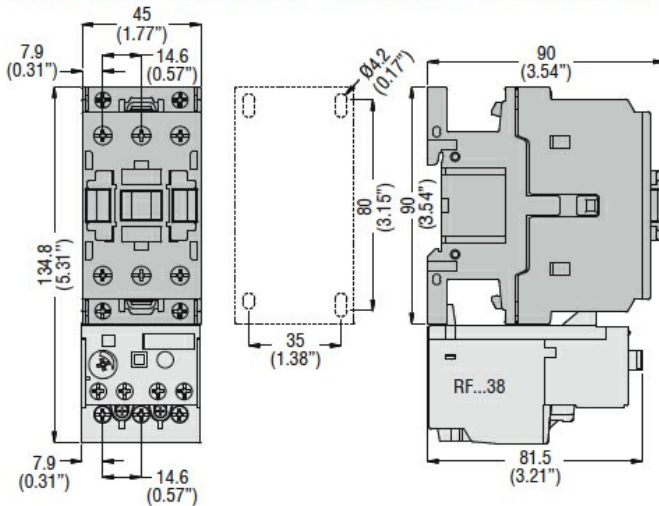
| | | |
|--|--|--|
| Auxiliary Rated operational voltage | V | 690 |
| Operating current AC15 | 24V 120V 240V 380V 480V 500V 600V | A 3 3 1.5 0.95 0.75 0.72 0.6 |
| Operating current DC13 | 125V 600V | A 0.11 0.22 |
| IEC Conventional free air thermal current I _{th} ≤ 40°C | A | 10 |
| Terminals | Auxiliary circuit type Auxiliary circuit screw Auxiliary circuit width Auxiliary circuit tool | screw and washer M3,5 8 mm Phillips 2 |
| Conductor section | Auxiliary circuit Flexible w/o lug max Auxiliary circuit Flexible c/w lug max | mm ² 2.5 mm ² 2.5 |
| Tightening torque for terminals | Auxiliary circuit min Auxiliary circuit max Auxiliary circuit min Auxiliary circuit max | Nm 0.8 Nm 1 lbin 0.59 lbin 0.74 |
| UL/CSA and IEC/EN 60947-5-1 designation | | B600-R300 |
| Ambient conditions | | |
| Operating temperature | min max | °C -25 °C 60 |
| Storage temperature | min max | °C -50 °C 70 |
| Compensation temperature | min max | °C -20 °C 60 |
| Max altitude | m | 3000 |
| Mechanical features | | |
| Operating position | normal allowable | Vertical plan ±30° |
| Fixing | | Direct mounting on BF09... BF38... |
| Weight | g | 160 |
| UL technical data | | |
| Full-load current (FLA) for three-phase AC motor | at 480V at 600V | A 32 A 32 |
| Dimensions | | |

MOTOR PROTECTION RELAY, NON PHASE FAILURE/NON SINGLE-PHASE SENSITIVE.
THREE-POLE (THREE-PHASE), MANUAL OR AUTOMATIC RESETTING. DIRECT MOUNTING
ON BF09 - BF38 CONTACTORS, 24...32A

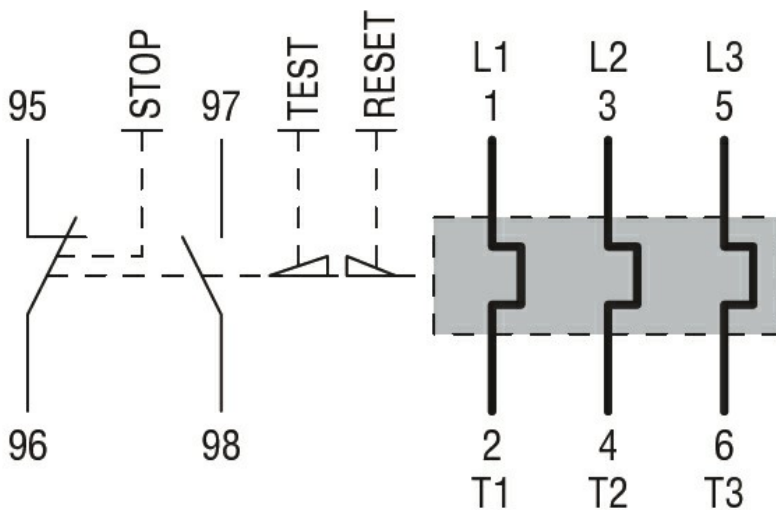
BF00 A... BF09 A... - BF12 A... - BF18 A... - BF25 A... three poles with
RF...38 thermal overload relay



BF26 00A... - BF32 00A... - BF38 00A... three poles with **RF...38** thermal overload relay



Wiring diagrams



Certifications and compliance

Compliance

CSA C22.2 n° 14

IEC/EN 60947-1

IEC/EN 60947-4-1

MOTOR PROTECTION RELAY, NON PHASE FAILURE/NON SINGLE-PHASE SENSITIVE.
THREE-POLE (THREE-PHASE), MANUAL OR AUTOMATIC RESETTING. DIRECT MOUNTING
ON BF09 - BF38 CONTACTORS, 24...32A

UL508

Certifications

CCC

cULus

EAC

ETIM classification

ETIM 8.0

EC000106 -
Thermal overload
relay