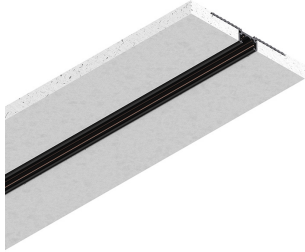


# L-16 TRACK

1018B3.02

**novalux**  
ITALIAN LIGHTING DESIGN SINCE 1948



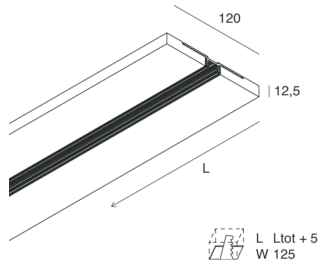
## Features

Use: Indoor  
Type of installation: RECESSED INTO PLASTERBOARD  
Colour: BLACK  
Dimming: ON/OFF, DALI  
Emergency: NO  
L: 2000mm  
A: 120mm  
H: 12.5mm  
Made in: ITALY  
Warranty: 5 years

## Tech data

IP: 20  
Insulation class: III  
Supply voltage: 48 Vdc

[L-16 TRACK: View more product info](#)



Novalux S.r.l. via Marzabotto, 2 40050 Funo di Argelato (BO) Italy  
Tel: +39 051 860558 · Fax +39 051 6647859 · Mail: info@novalux.it · VAT number 00536541204 · novalux.com  
Company subject to the management and coordination by SLV GmbH


This technical data sheet is owned by Novalux S.r.l., all rights reserved. Novalux S.r.l. reserves the right to make changes without prior notice.  
Last update: 6/8/2025, 13:06:51

# L-16 TRACK

1018B3.02

**novalux**  
ITALIAN LIGHTING DESIGN SINCE 1948

## COMPLETION ACCESSORIES

	T-48 MINI/L-16 TRACK: ALIMENTAZ. NERA	108407.02
	T-48 MINI/L-16 TRACK: GIUN.EL. L NERO	108409.02
	T-48 MINI/L-16 TRACK: COVER L=3000 NERA	108411.02
	T-48 MINI/L-16 TRACK: GIUN.EL. LIN. NERO	108408.02
	T-48 MINI/L-16 TRACK: GIUN.EL.SOF/PAR NE	108410.02
	L-16 TRACK: TESTATA CHIUSURA NERA	1018B6.02

## ELECTRICAL ACCESSORIES

	ALIMENTATORE 48V 320W IP65	101313.99
	OPTOISOLATORE DALI 48V 10W	101320.99
	ALIMENTATORE 48V 150W ON/OFF	101344.99



Novalux S.r.l. via Marzabotto, 2 40050 Funo di Argelato (BO) Italy  
Tel: +39 051 860558 · Fax +39 051 6647859 · Mail: info@novalux.it · VAT number 00536541204 · novalux.com  
Company subject to the management and coordination by SLV GmbH

This technical data sheet is owned by Novalux S.r.l., all rights reserved. Novalux S.r.l. reserves the right to make changes without prior notice.  
Last update: 6/8/2025, 13:06:51