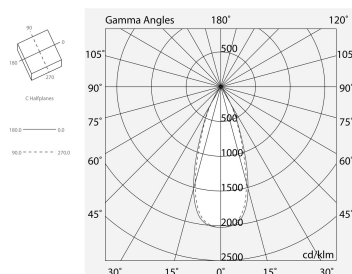
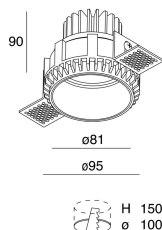
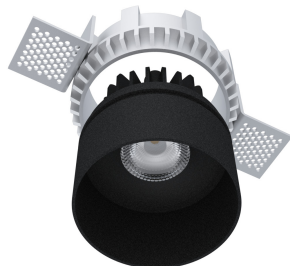


WELL/MINI WELL

101902.02

novalux

ITALIAN LIGHTING DESIGN SINCE 1948



Features

Use: Indoor
Type of installation: RECESSED INTO PLASTERBOARD
Emission: DIRECT
Optics: SPOT
Beam: 36°
Colour: BLACK
Dimming: WITH ACCESSORY
Emergency: WITH ACCESSORY
H: 90mm
ø: Ø95
D: 100 mm
Warranty: 5 years
Weight: 0.44kg

Tech data

Luminaire luminous flux: 797lm
Luminous flux in emergency: 1h: 44% / 3h: 18%
IP: 54
Insulation class: III
Supply voltage: DC 500 mA
UGR: <19
SELV: No

Source

Light source: LED
Source power: 10W
Source luminous flux: 1010lm
Colour temperature: 4000K
CRI: >90
LED lifespan: 50000h L80 B20

Compliance

CEI EN 60598-1:2021 + A11:2023, CEI EN 60598-2-1:2022, CEI EN 60598-2-2:2012

Standards

Photobiological risk: RISK GROUP 1 Certified fixture in RISK GROUP 1 (Low Risk)-The fixture does not pose a hazard due to normal behavioral limitations on exposure - in accordance with CEI EN 62471:2010-01, IEC TR 62778:2014.

CAM edilizia: The product complies with the requirements for public buildings, ministerial decree of 23rd June 2022 n.256.

[WELL/MINI WELL: View more product info](#)



Novalux S.r.l. via Marzabotto, 2 40050 Funo di Argelato (BO) Italy
Tel: +39 051 860558 · Fax +39 051 6647859 · Mail: info@novalux.it · VAT number 00536541204 · novalux.com
Company subject to the management and coordination by SLV GmbH

This technical data sheet is owned by Novalux S.r.l., all rights reserved. Novalux S.r.l. reserves the right to make changes without prior notice.
Last update: 8/8/2025, 07:57:32

ELECTRICAL ACCESSORIES



ALIM. LED MAX 18W 500MA

101325.99



ALIM. LED 14W 500MA/2-27V

101331.99

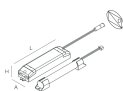
DIMMABLE ACCESSORIES



ALIM. LED 26W 500MA/9-52V DALI/PUSH

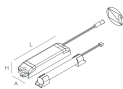
101334.99

EMERGENCY ACCESSORIES



KIT EMERGENZA 3H 10V-54V

18005.99



KIT EMERGENZA 1H 10V-54V

18004.99
